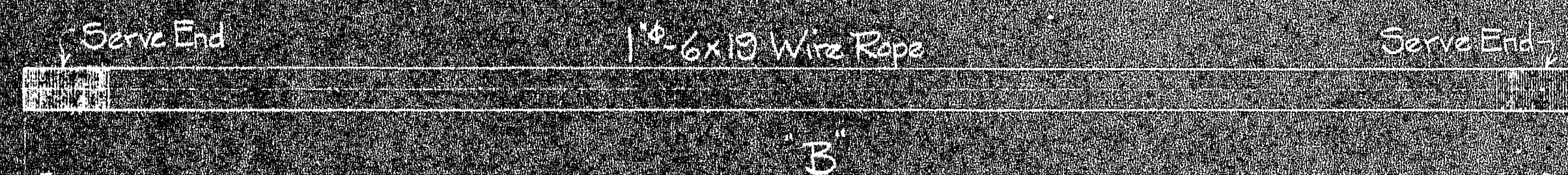
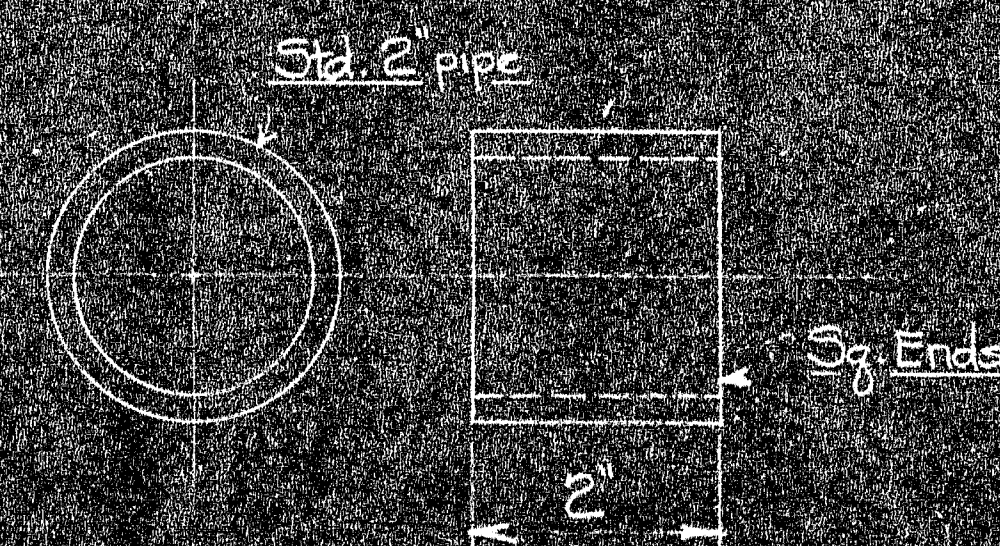


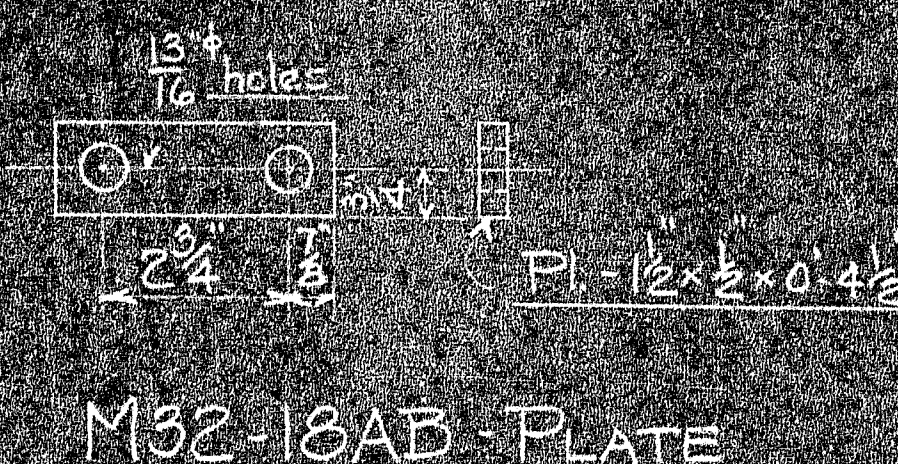
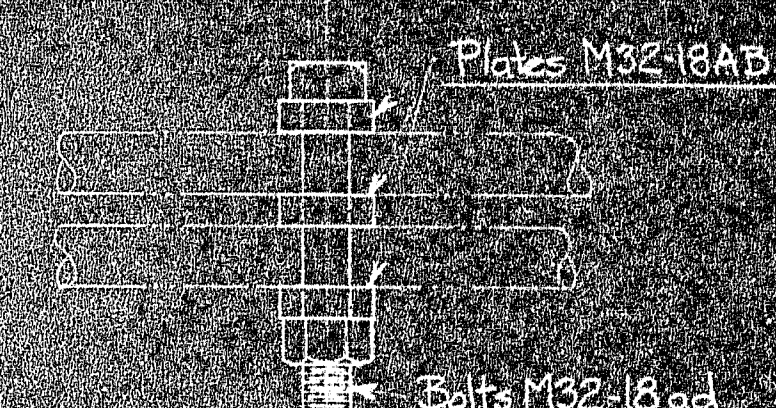
MARK	Nº REQ'D	"A"	LOCATION
M32-18A	4	245'-0"	Tower-11
M32-18B	4	205'-0"	Tower-13
M32-18C	4	190'-0"	Tower-21
M32-18D	4	230'-0"	Tower-23



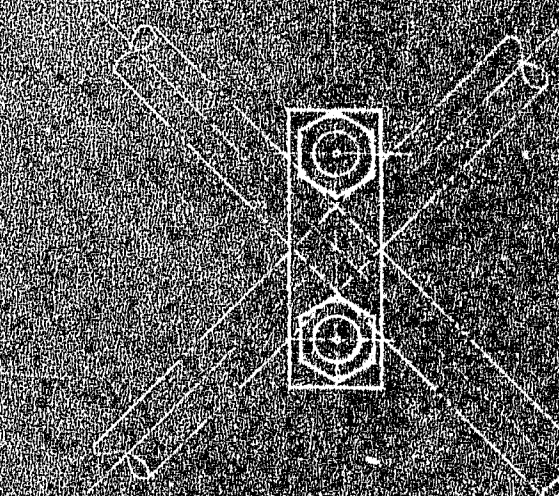
MARK	Nº REQ'D	"B"	LOCATION Bottom Top
M32-18E	4	100'-0"	6-8
M32-18F	4	105'-0"	7-9
M32-18G	4	108'-0"	8-10
M32-18H	4	116'-0"	9-11
M32-18J	4	150'-0"	10-13
M32-18K	4	93'-0"	10-8
M32-18M	4	98'-0"	11-9
M32-18N	4	124'-0"	13-10
M32-18P	4	129'-0"	21-24
M32-18R	4	101'-0"	23-25
M32-18S	4	142'-0"	24-21
M32-18T	4	95'-0"	24-26
M32-18U	4	109'-0"	25-23
M32-18V	4	92'-0"	25-27
M32-18W	4	102'-0"	26-24
M32-18X	4	97'-0"	27-25
M32-18Y	4	93'-0"	28-26
M32-18Z	4	90'-0"	29-27



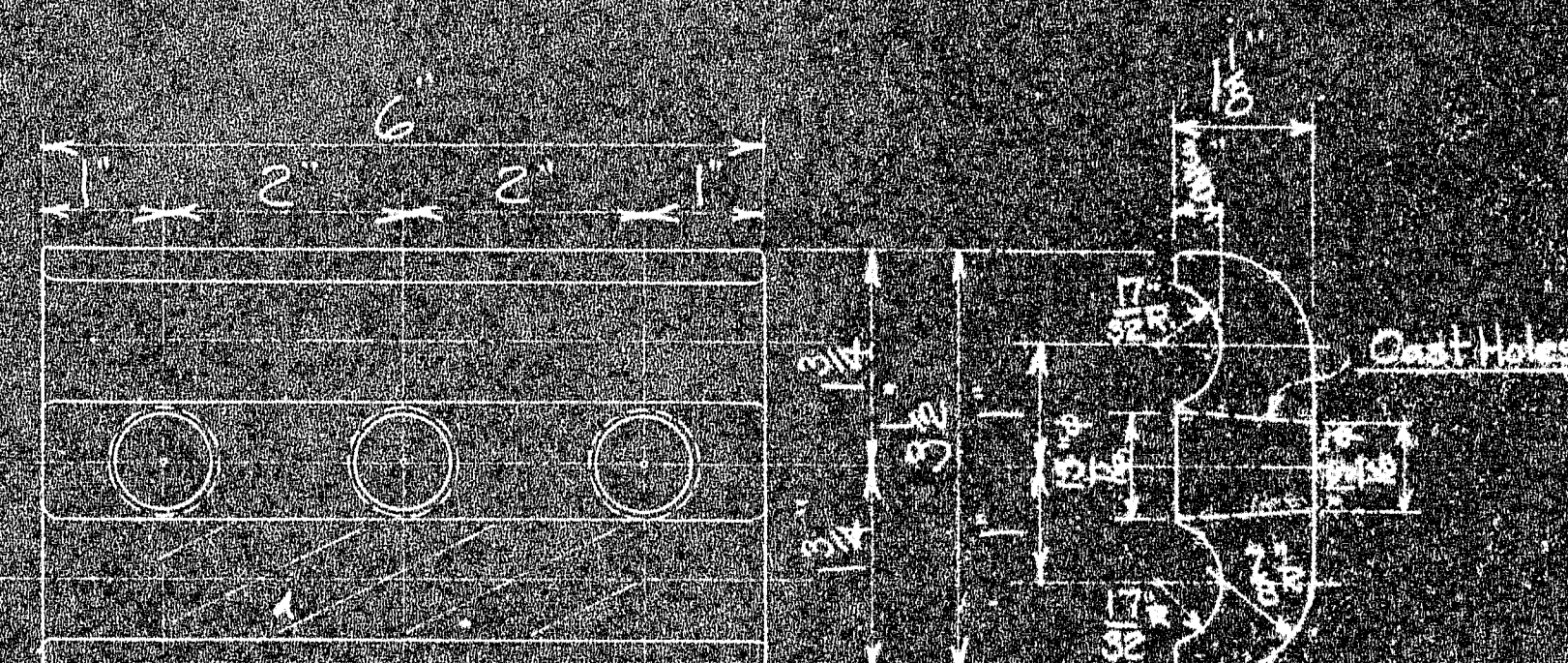
M32-18AA - SPACER



M32-18AB - PLATE



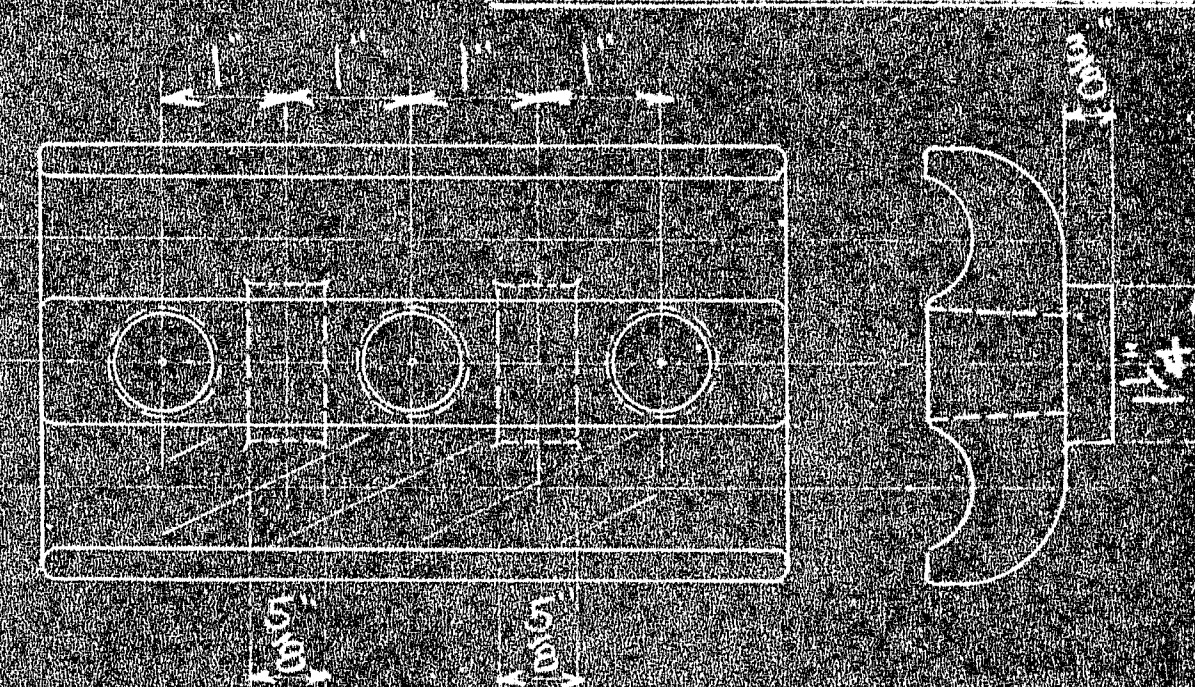
CROSS CLAMP ASSEMBLY



Corrugate one side 4' lg to suit sample rope 6\"/>

M32-18AE - TOP HALF CLAMP - 6\"/>

M32-18AJ - TOP HALF CLAMP - 7\"/>



M32-18AF - BOTTOM HALF CLAMP - 6\"/>

Same as M32-18AE except as noted.

M32-18AK - BOTTOM HALF CLAMP - 7\"/>

Same as M32-18AJ except as noted.

M32-18AK		Class B Mechanite		Bottom Half Clamp - 7\"/>
M32-18AJ		Class B Mechanite		Top Half Clamp - 7\"/>
M32-18ag	1050	Steel	5311-13	3\"/>
M32-18AF	340	Class B Mechanite	5314-13	Bottom Half Clamp - 6\"/>
M32-18AE	340	Class B Mechanite	5314-13	Top Half Clamp - 6\"/>
M32-18ad	325	Steel	5311-13	3\"/>
M32-18AB	450	Steel	5310-13	Plate
M32-18AA	16	Pipe	5313	Spacer
M32-18Z	16	SEE TABLES	5313	Stays
M32-18A				

MARK	REQ'D	MAT'L	REQ. NO.	NAME	REMARKS
------	-------	-------	----------	------	---------

BILL OF MATERIAL

JOHN A. ROEBLING'S SONS CO., TRENTON, N. J.

DEER ISLE BRIDGE

TEMPORARY STAYS

MISCELLANEOUS DETAILS

Quantity M32-18AEW Clamps  
M32-18AJ & AK Cancelled  
BY REVISIONS DATE 7-2-43

APPROVED

SCALE 3\"/>

DES DRG 6-22-43

TR

CH

M32

18

